



Corporate Overview Brief

*ONE company, ONE team, ONE goal
constantly exceeding the expectations of our customers*

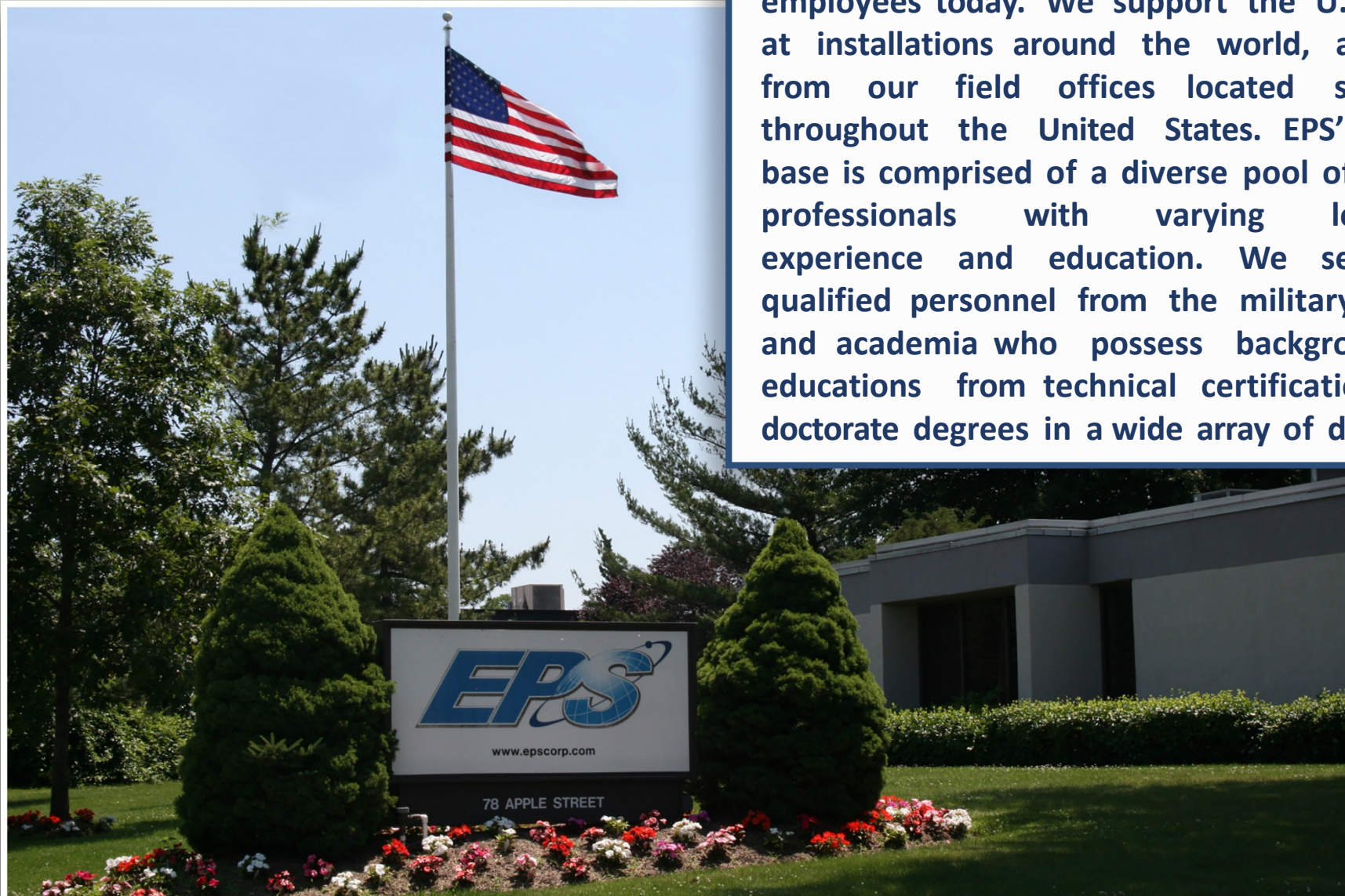


EPS Corporation Headquarters
78 Apple Street, Tinton Falls, New Jersey, 07724-2695
Telephone (732) 747-8277 - Facsimile (732) 530-4726 - www.epscorp.com



CMMI DEV/3SM
Satisfiability of Requirements for Development Processes

EPS has grown from a one-person business in 1983 to a 20-year average of approximately 300 employees today. We support the U.S. Military at installations around the world, as well as from our field offices located strategically throughout the United States. EPS' employee base is comprised of a diverse pool of dedicated professionals with varying levels of experience and education. We seek highly qualified personnel from the military, industry, and academia who possess backgrounds and educations from technical certifications up to doctorate degrees in a wide array of disciplines.



Engineering Services Capabilities



Software & Information
Management



Design Engineering



Cyber & IT Services



Logistics Support
Services

EPS Corporation is a Worldwide Engineering Services Company

EPS prides ourselves on being a *'single entity'* company that provides a full spectrum of engineering, information technology, software and logistics support services to our commercial, military, and Government clients.

Each of our professionals have immediate and direct access to our corporate network which provides the in-depth execution support in our core competency technical disciplines.



Chief Executive Officer (CEO) - President
ANTOINETTE MUSORRAFITI



Executive Vice President
JOHN GAGLIANO
*Chief Operating Officer (COO)
General Counsel*



Executive Vice President
ALLEN ARMSTRONG
Chief Technology Officer (CTO)

EPS Corporation (EPS) is a Woman Owned Small Business (WOSB) with the capacity, quality and business processes to support customers on a worldwide basis.

Since 1983 EPS has been providing Systems Engineering and Rapid Prototyping Solutions; Training, Logistics and Fielding Solutions; IT, Information Management Solutions, Software and Cyber Security Solutions; and Network and Communication Solutions that support the Department of Defense, civilian agencies and commercial clients worldwide.

More Information on our leadership team is available at www.epscorp.com

Locations:

HEADQUARTERS

Tinton Falls, New Jersey

DIVISIONS

Eatontown, New Jersey

Fayetteville, North Carolina

Panama City Beach, Florida

SATELLITE OFFICES

Belcamp, Maryland

Lexington Park, Maryland

San Diego, California

OCONUS

Germany

Korea

Kuwait

Iraq

Italy

United Kingdom

Turkey

Afghanistan



EPS is committed as an organization to maintaining institutional certifications and partnerships that enhance the quality of the services we provide. Our certifications include:



- International Organization Standardization (ISO) 9001:2015
- Capability Maturity Model Integration (CMMI) DEV appraised at Level 3 for Systems and Software
- AS9100D Quality Management Systems Certified for Aviation, Space, and Defense Organizations
- Microsoft Gold Certified Partner
- EPS also has both a DCAA approved accounting system and DCMA approved purchasing system



EPS has been awarded over \$500M in task orders under the following active prime contract vehicles:

- NAVY SEAPORT-e
- NAVY SEAPORT-NxG
- AIR FORCE NETCENTS-2 NETOPS SB
- ARMY CECOM RS3 SB
- GSA MULTIPLE AWARD SCHEDULE (MAS)
- GSA CONNECTIONS II
- ARMY CECOM FOREIGN MILITARY SALES (FMS)

EPS is a Small Business and WOSB under North American Industry Classification System (NAICS) codes 517311, 517312, 334111, 334511, 541715, 511130, and others.



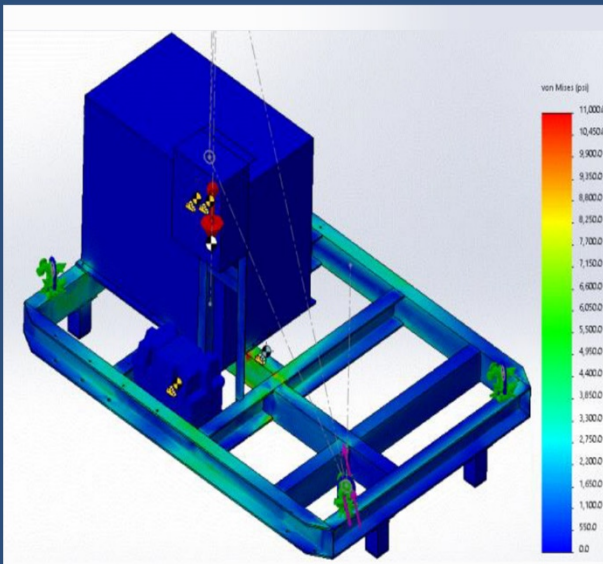
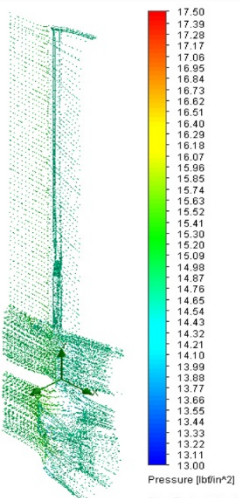
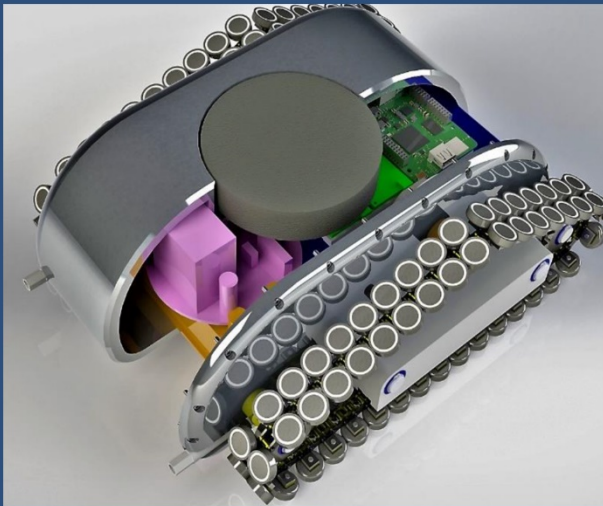
EPS provides full spectrum design engineering services from concept to fielding for Government and commercial customers. Our personnel are skilled in all engineering disciplines, including:

- Systems Engineering
- Simulation Engineering
- Research & Development
- Test & Evaluation
- Rapid Prototyping

We provide the full spectrum of simulation capability including Finite Element Analysis (FEA) and Computational Fluid Dynamics (CFD).

Our experienced scientists and engineers specialize in Magnetics, Physics, Acoustics, RF/SHF Communications, Tactical Networking, C4I Systems development, operation and maintenance, and Signal Processing.

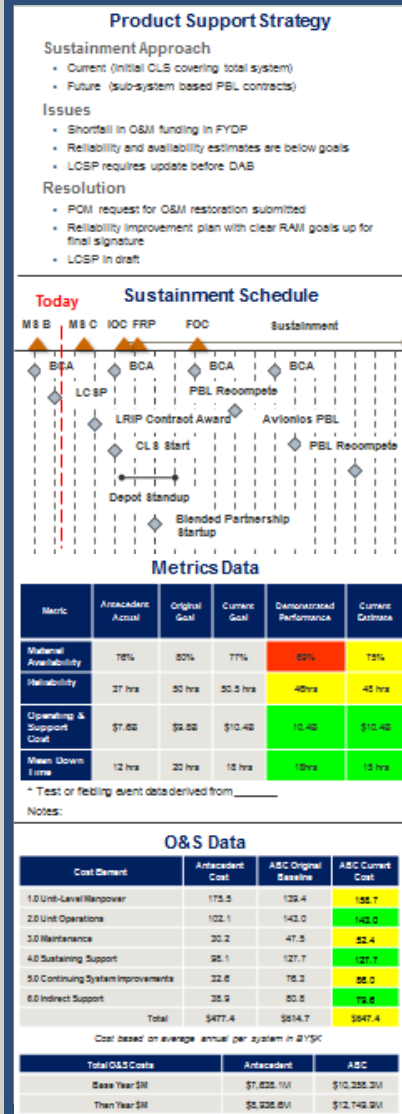
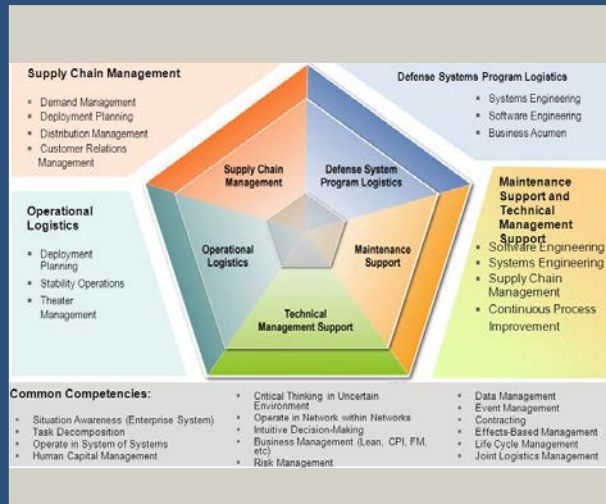
EPS professionals are experienced in a variety of engineering tools including MATLAB, Solid Edge, and Solid Works.





EPS provides the full suite of Logistics Support Services that fit a variety of customer needs. This support includes:

- Maintenance Planning
- Reliability Centered Maintenance (RCM)
- Logistics Supportability Analysis
- Supply Support
- Manpower
- Technical Documentation, including TMs, ETMs and IETMs
- Training - New Equipment Training (NET), Technical (IA, Cybersecurity, Networks) and Standards (SGML, XML, MIL-STD) Training
- Packaging, Handling, Storage & Transportation
- Support / Test Equipment
- Foreign Military Sales (FMS) Support
- Mobilization/Demobilization
- Day-to-Day Support Operations





EPS provides a wide-range of IT Services. These services/support include:

- **Network & Communications Support**
 - Network Operations Center Support
 - Network/System Administration and Application Solutions
 - Network Infrastructure: ISP/OSP
 - Classified (SIPRNet, CENTRIX, JWICS) and Unclassified (NIPRNet, NGO) domains
 - Enterprise communication design and installation, including RCDD certified design
 - Military tactical network design and installation, including RF/SHF/UHF/HF/VHF/EHF based systems and SATCOM solutions
- **IA / Cybersecurity**
 - RMF and DIACAP accreditation
 - DoD 8570.01 IAM and IAT certified professionals
- **Service / Help Desk**
- **Enterprise Process Re-Engineering**



Our experience includes software development for a broad spectrum of military applications to include mine warfare, ISR, C4I, imagery analysis, missile defense, counter IED, robotics, Interactive Electronic Technical Manuals (IETMs) and enterprise data management.

Software Development and Information Management (IM) are core EPS strengths. We provide the expert resources and personnel to deploy solutions that increase productivity and operational agility for our customers.

We specialize in:

- Software Design, Development and Implementation
- Agile Software Development Methodologies
- Web and Collaboration System Support
- Content Management Systems (CMS)
- Interactive Electronic Technical Manual (IETM) Applications
- Technical Documentation Specifications and Standards
- Extensible Markup Language (XML), Standard Generalized Markup Language (SGML) and Hypertext Markup Language (HTML) Applications
- Functional Requirements Analysis
- Activity and Process Modeling
- Learning Management Systems (LMS) and Learning Content Management Systems (LCMS)
- Data Conversion



Antoinette (Toni) Musorrafiti

Chief Executive Officer

President

Toni.Musorrafiti@epscorp.com

732.747.8277 Ext. 2000

Allen Armstrong

Executive Vice President

Chief Technology Officer

Mission Support Services

allen.armstrong@epscorp.com

850.588.5145

John Gagliano

Executive Vice President

Chief Operating Officer and

General Counsel

John.gagliano@epscorp.com

732.747.8277 Ext. 1007

Pushpa Merchant

Senior Vice President

Information

Management Solutions

pushpa.merchant@epscorp.com

732.962.7680

Bruce Brooke

Senior Vice President

Business and Capture Development

bruce.brooke@epscorp.com

908.433.1149

Greg Zell

Vice President

Field Services & Network Solutions

gregory.zell@epscorp.com

732.243.6678

Daniel Guilbault

Vice President

Business Development

daniel.guilbault@epscorp.com

405.922.9013

12



*ONE company, ONE team, ONE goal
Constantly Exceeding the Expectations of Our Customers*